

Technical Information

Super Coil
Series 5/8" I.D.

CV

Check
Valves

SH

Shuttle
Valves

LM

Load/Motor
Controls

FC

Flow
Controls

PC

Pressure
Controls

LE

Logic
Elements

DC

Directional
Controls

MV

Manual
Valves

SV

Solenoid
Valves

PV

Proportional
Valves

CE

Coils &
Electronics

BC

Bodies &
Cavities

TD

Technical
Data

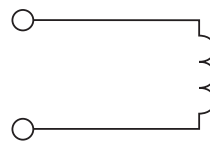
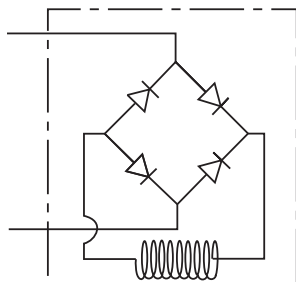
Features

- Integral Deutsch connector coil exceeds IP69K standards
- Integral Deutsch connector coil thermal shock dunk test rated
- Integral Amp Jr. coil exceeds IP67 standards for thermal shock, water resistance and "dunk capability"
- Universal 50/60 Hz operation
- Coil hermetically sealed, requires no O-rings or waterproofing kits
- External plated steel flux-carrying band (unlike encapsulated band) enables coil to withstand severe thermal shocks without cracking
- Symmetrical coil can be reversed without affecting performance

Specifications

| | | |
|---|---|--------------|
| Coil Type | S | Standard |
| | P | Puissant |
| Nominal Wattage (See Ordering Information For Exact Wattage) | S | 18 Watts |
| | P | 28 Watts |
| Duty Cycle | Continuous @ 100% voltage | |
| Magnetic Wire Insulation Class | 'N' Rated at 200°C (392°F) | |
| Temperature Range | -40°C to +200°C (-40°F to +392°F) | |
| Temperature Rise At Nominal Voltage And Natural Ventilation | S | 75°C (135°F) |
| | P | 95°C (172°F) |
| Dielectric Strength Maximum Current Leakage (Amps) | .0005 In dry lab condition at 1000V AC for 30 seconds | |
| | .001 After being immersed in 23°C (77°F) water with waterproof connector for 24 hours at 500V AC | |
| Encapsulating Material | Glass filled rynite | |
| Color Identification On The Terminal Boss | S | Black Ring |
| | P | Red Ring |
| Weight | 0.29 kg (0.64 lbs.) | |

AC Coil Assembly



Ordering Information

CA

Super Coil
5/8" I.D.

Wattage

Voltage

Termination

| Code | Wattage |
|------|----------|
| S | Standard |
| P | Puissant |

| Code | Voltage | Watts | | Amps | | Ohms** | |
|------|---------|-------|----|------|------|--------|------|
| | | S | P | S | P | S | P |
| 010 | 10 VDC | 18 | 28 | 1.80 | 2.80 | 5.56 | 3.57 |
| 012* | 12 VDC | 18 | 28 | 1.50 | 2.33 | 8.00 | 5.14 |
| 018 | 18 VDC | 18 | 28 | 1.00 | 1.56 | 18.0 | 11.6 |
| 024* | 24 VDC | 18 | 28 | 0.75 | 1.17 | 32.0 | 20.6 |
| 048 | 48 VDC | 18 | 28 | 0.38 | 0.58 | 128.0 | 82.3 |
| 115* | 115 VAC | 18 | 28 | 0.20 | 0.26 | 554 | 417 |
| 230 | 230 VAC | 18 | 28 | 0.10 | 0.15 | 2100 | 1430 |

*Standard Voltages

**Resistance $\pm 10\%$ at 68°F

| Code | Termination |
|------|---|
| A | Amp Jr. (DC Only) |
| AD | Amp Jr. with 3 Amp Diode (DC Only) |
| C | Double Lead Wire with Conduit Connector (AC Only) |
| *D | DIN 43650 (AC or DC, Supplied without DIN Connector) |
| H | Integral Deutsch |
| HE | Integral Deutsch with 3 Amp Diode |
| HS | Integral Deutsch with Internal Seal |
| *L | Double Lead (DC Only) |
| LS | Sealed Lead Wire IP69K Rated (Available January 1, 2011) |
| LD | Double Lead with Deutsch Connector DT04-2P-EP04 (DC Only) (Use 'H' series if possible) |
| LE | Double Lead with 3 Amp Diode (DC Only) |
| PF | Double Lead Wire with Packard Female Weather Pack Connector 1201 5792 (DC Only) |
| PM | Double Lead Wire with Packard Male Weather Pack Connector 1201 0973 (DC Only) |
| *S | Double Spade (DC Only) |
| *W | Double Screw (DC only) |
| WE | Double Screw with 3 Amp Diode (DC Only) |
| *Y | Single Screw (Internally Grounded, DC Only) |

*UL listed 12/24/48 VDC only.

Note: Additional voltages and other terminals are available. Some coils are UL approved. For details please consult factory.

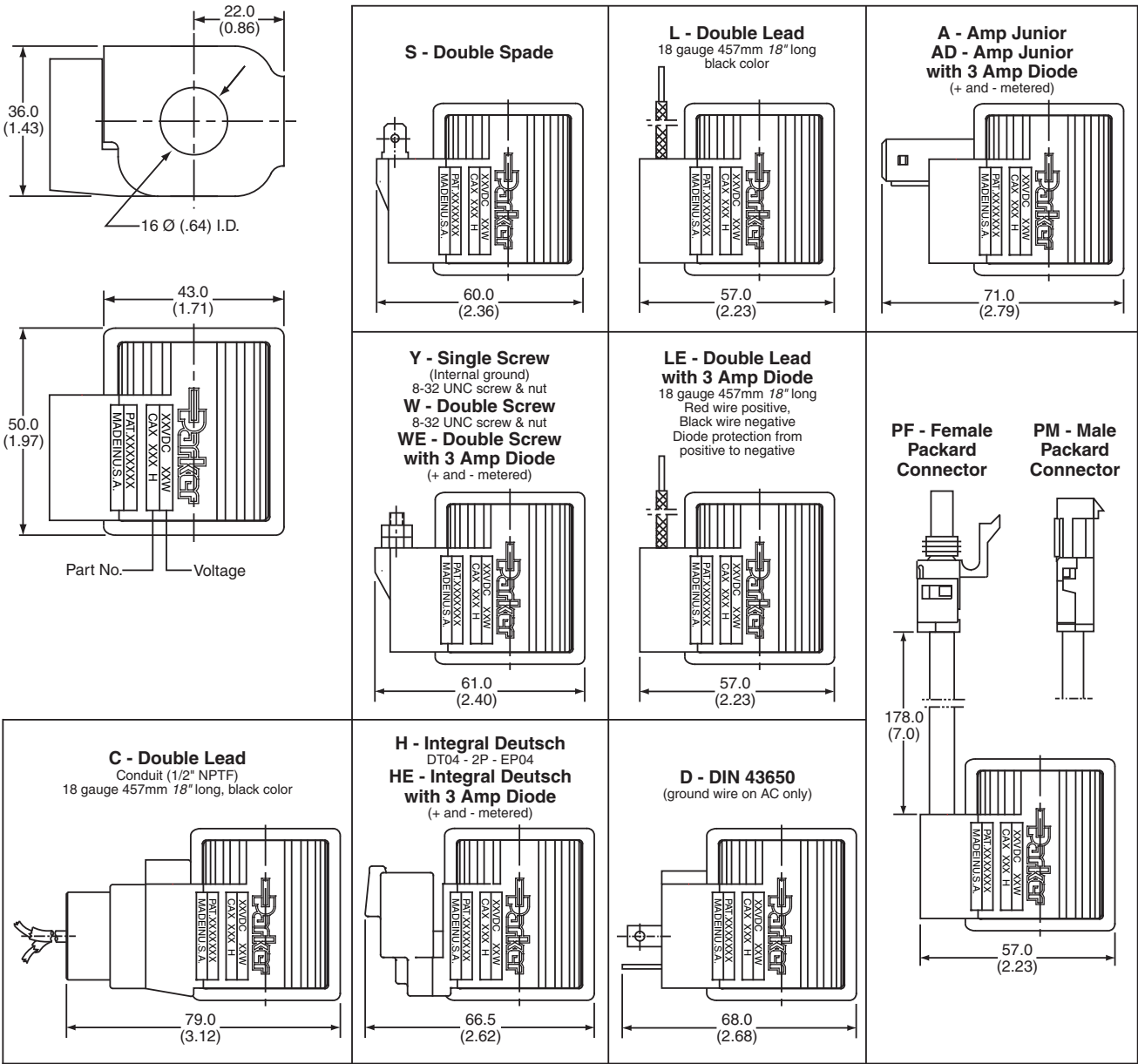
DIN Female Mating Connector: See page CE2

Deutsch Mating Connector: # DT06-2S

Packard Male Weather Pack Connector: 12010973

Packard Female Weather Pack Connector: 12015792

Terminal Styles and Dimensions



NOTES:

1. The standard A.C. coil includes a molded-in full wave rectifier rated for 800 peak reverse voltage.
2. All P Puissant (high wattage) coils use a red ring as an indication marker on the terminal boss. (No ring on Integral Deutsch connector.)

718164 - Wire connector assembly with 36" leads for Super Coils with Integral Deutsch connectors.

